

## Easy and cost efficient

All over the world, in countless applications, liquid flow meters fitted with mechanical registers are being used to measure and record the transfer of liquids. In the petroleum industry especially, fast and accurate volumetric measurement during custody transfer has always been critical, second only in importance to safety.

Nowadays, electronic systems are rapidly replacing the old mechanical registers, bringing with them a number of advantages. For example, an electronic encoder interface on a fuel truck meter, when coupled to an onboard computer and a GSM module provides a fast and accurate electronic record, which could be used in numerous applications, such as invoicing and logistics.

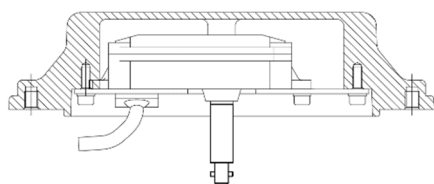
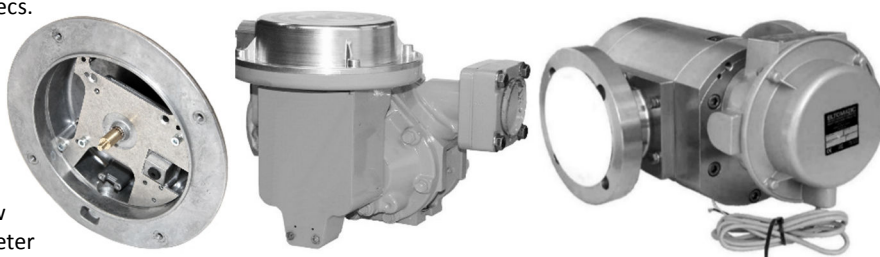
Eltomatic has developed a simple solution which allows you to quickly replace a mechanical register with an electronic encoder assembly. A sturdy aluminum housing with an Ex approved encoder mounted inside is easily attached to the flowmeter using only 4 bolts.

The cable outlet on the housing can be threaded for a conduit tube or a cable gland. The type of thread can be specified. The encoders are also available with Ex approved armored cable.

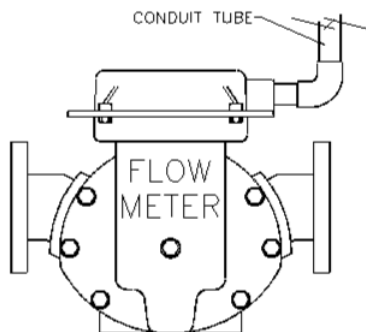
Encoder shaft couplings are available to suit most meters found on the market and the encoder electronic parameters can be specified to suit individual requirements as well as local and national Weights & Measures requirements.

## Electronic interface upgrade kit for LC/PD meters

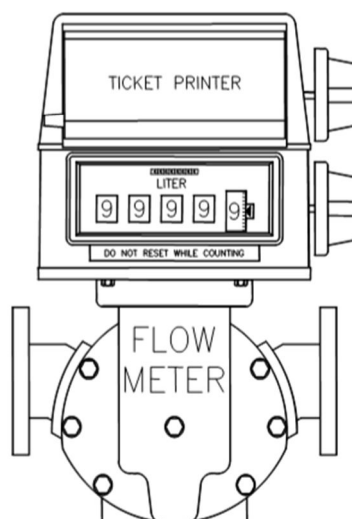
- ✓ 1pcs 98.3XXX shaft encoder 01-09 various specs.
- ✓ 1pcs 70.1051 aluminum cover
- ✓ 1pcs 71.1029 aluminum bracket
- ✓ 4pcs 51.1530 M4x10mm – hex head screw
- ✓ 4pcs 51.1510 M4x6mm – hex head screw
- ✓ 4pcs 52.1540 lock washer type  $\phi 4 \times \phi 8 \text{mm}$
- ✓ 1pcs 59.2520 plastic cable clamp
- ✓ 2pcs 51.0045 M2.5x8mm cylinder head screw
- ✓ 1pcs 56.0501 sealing gasket from cover to meter



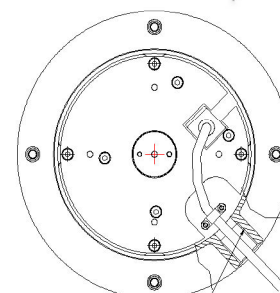
CONDUIT TUBE



Meter with encoder interface

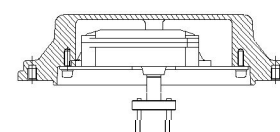


Meter without encoder interface



Fixing holes  
4 Screws M6  
or M4 or 1/4"

cable gland  
fitted here.  
specified  
thread



## Electronic interface upgrade kit for Avery Hardoll meters

- ✓ 1pcs 98.3XXX shaft encoder 01-09 various specs.
- ✓ 1pcs 70.1052 aluminum cover
- ✓ 1pcs 71.1029 aluminum bracket
- ✓ 4pcs 51.1530 M4x10mm – hex head screw
- ✓ 4pcs 51.1510 M4x6mm – hex head screw
- ✓ 4pcs 52.1540 lock washer type  $\phi 4 \times \phi 8 \text{mm}$
- ✓ 1pcs 59.2520 plastic cable clamp
- ✓ 2pcs 51.0045 M2.5x8mm cylinder head screw
- ✓ 8pcs 58.0900 Dots of red sealing lacquer

