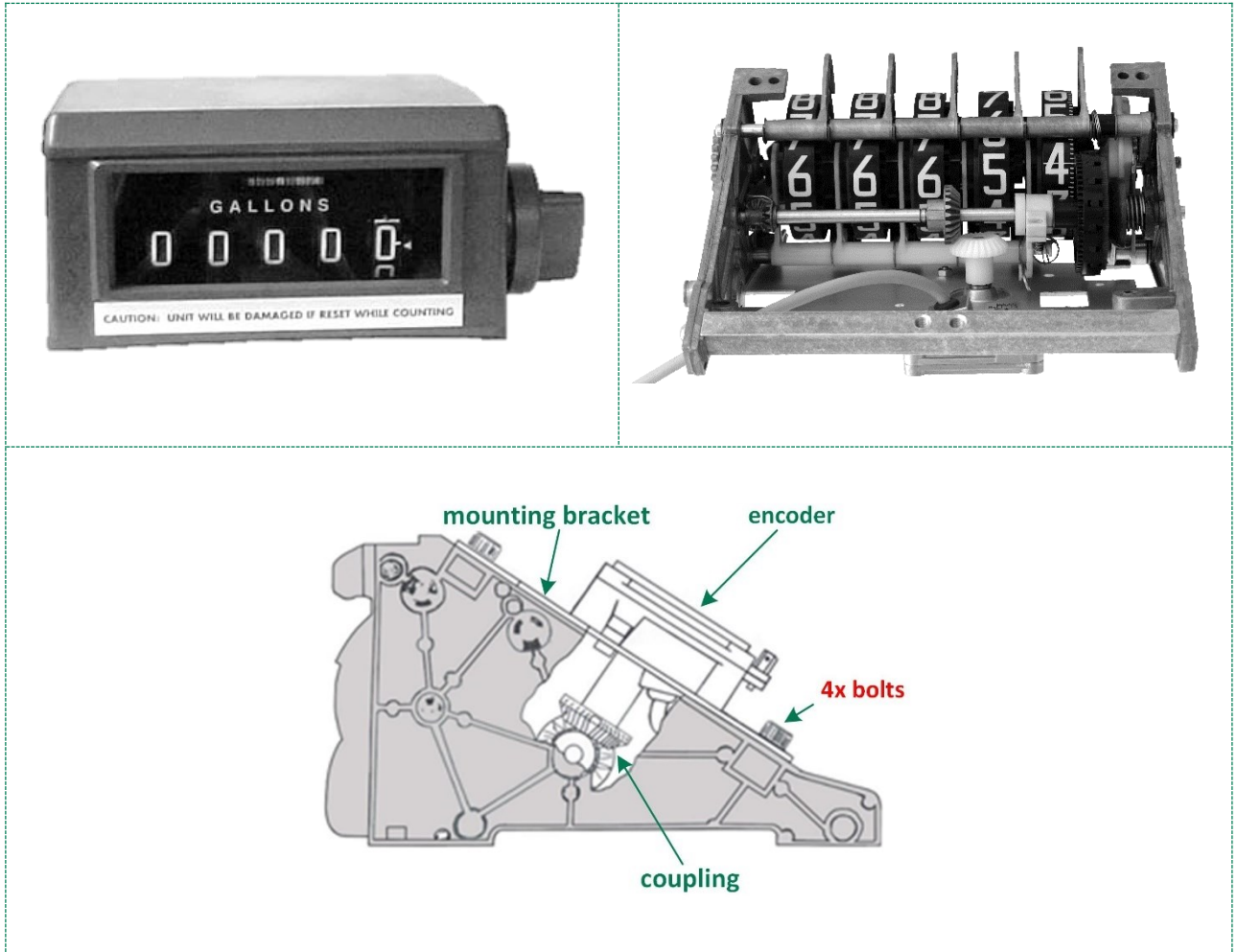


Retrofit/electrify kits for mechanical registers

Kit p/n **99.5001**. Mechanical register **without** printer (encoder type 01-08):



Included in the kit no **99.5001**:

Description	Part number
1pcs. mounting bracket.	
Bolts, nuts, and washers for assembling the encoder and mounting bracket.	
1pcs. Installation manual.	00.6001

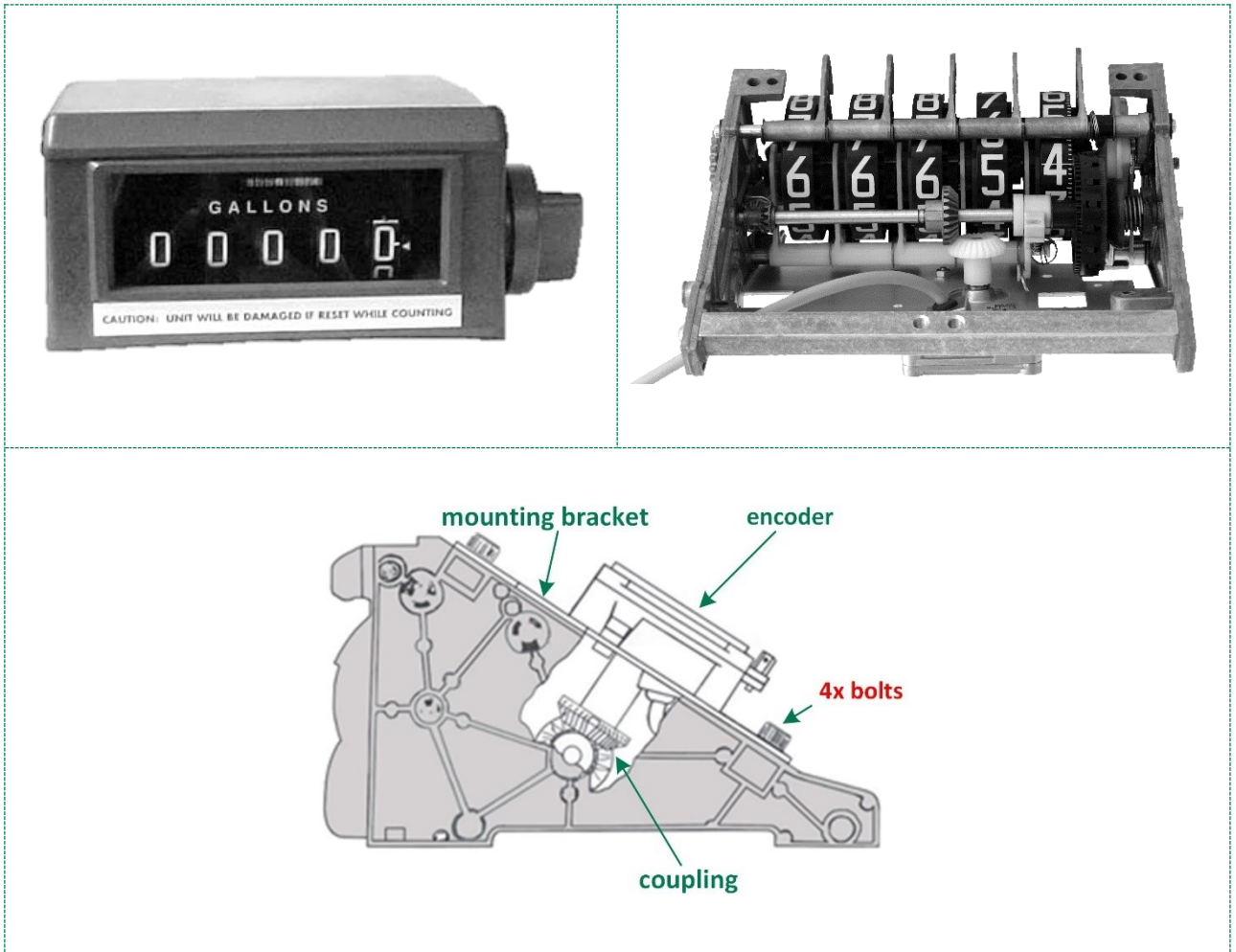
Not included in the kit **99.5001**:

Description	Part number
1pcs. encoder* type 01-08 (with coupling** p/n 62.0098).	98.xxxx
1pcs. optional cable gland with nut PG11 Ø5-11mm for cable entry.	59.2513
4pcs. bolts for mounting the kit into the mechanical register. These are parts of the mechanical register.	

*If the encoder is ordered together with a kit, it will be factory assembled as one unit.

**The coupling is factory installed in the encoder and is not interchangeable.

Kit p/n 99.5004. Mechanical register **without** printer (encoder type 01-09):



Included in the kit 99.5004:

Description	Part number
1pcs. Mounting bracket.	71.1007
Bolts, nuts, and washers for assembling the encoder and mounting bracket.	
1pcs. Installation manual.	00.6001

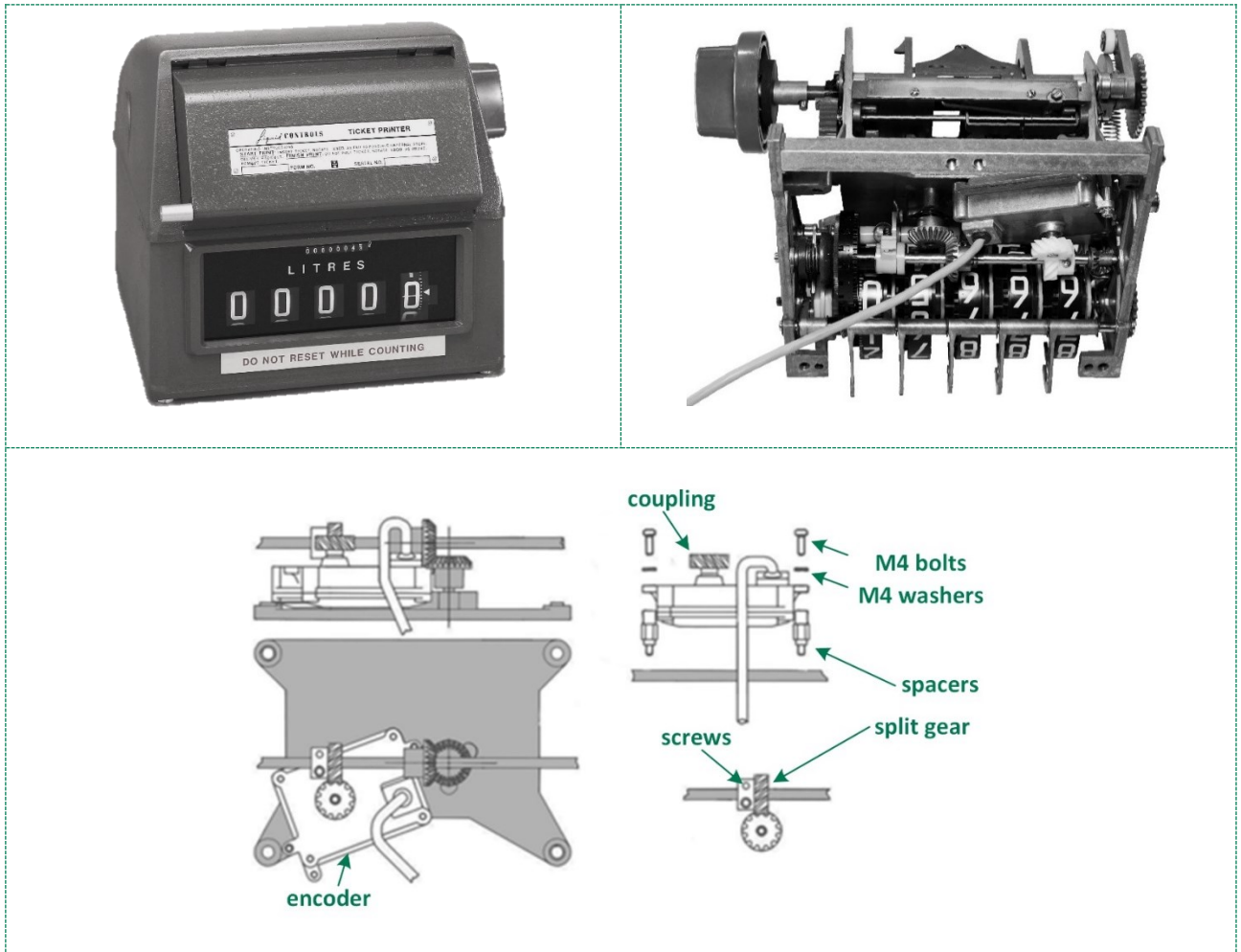
Not included in the kit 99.5004:

Description	Part number
1pcs. encoder * type 01-09 (with coupling** p/n 62.0162).	98.xxxx
1pcs. optional cable gland with nut PG11 Ø5-11mm for cable entry.	59.2513
4pcs. bolts for mounting the kit into the mechanical register. These are parts of the mechanical register.	

*If the encoder is ordered together with a kit, it will be factory assembled as one unit.

**The coupling is factory installed in the encoder and is not interchangeable.

Kit p/n **99.5002**. Mechanical register **with** printer (encoder type 01-09)



Included in the kit **99.5002**:

Description	Part number
Gear, screws, bolts, washers, and spacers necessary for the installation.	
1pcs. Installation manual.	00.6001

Not included in the kit **99.5002**:

Description	Part number
1pcs. encoder* type 01-09 (with coupling** p/n 62.0071).	98.xxxx
1pcs. optional cable gland with nut PG11 Ø5-11mm for cable entry.	59.2513

*If the encoder is ordered together with a kit.

**The coupling is factory installed in the encoder and is not interchangeable.

For more information:

- Visit Eltomatic's homepage:

www.eltomatic.com

www.eltomatic.com/products/retrofit-kits-for-mechanical-registers

- Don't hesitate to contact us:

Phone: +45 98 24 61 66

Email: eltomatic@eltomatic.com