

# ELTOMATIC

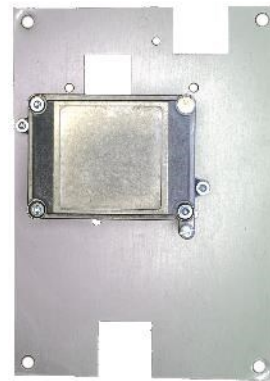
A part of the Scancon Group

How to electrify mechanical registers with use of Eltomatic's **ATEX** & **IECEX** encoders and kit solutions.



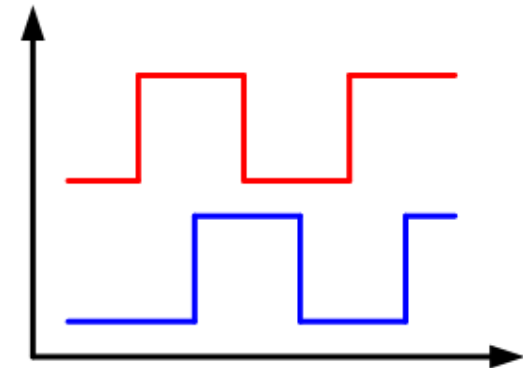
Mechanical register

+



Eltomatic kit

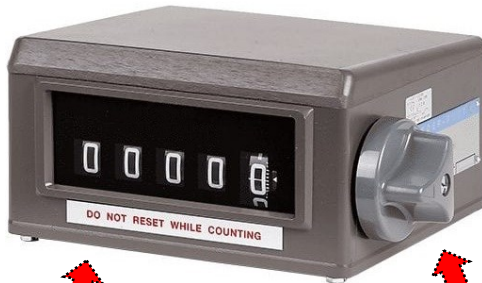
=>



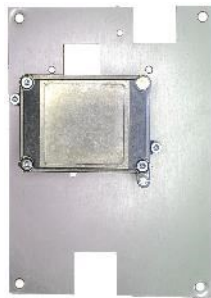
Electrical output

- Eltomatic's kit solutions support 2 variants of mechanical registers

Without printer



2 kits are available for the register without printer



Kit with encoder type 01-09

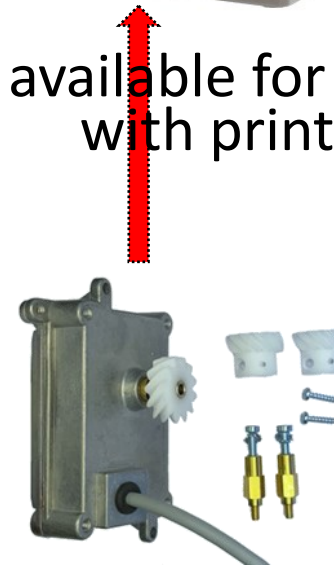


Kit with encoder type 01-08

With printer



1 kit is available for the register with printer

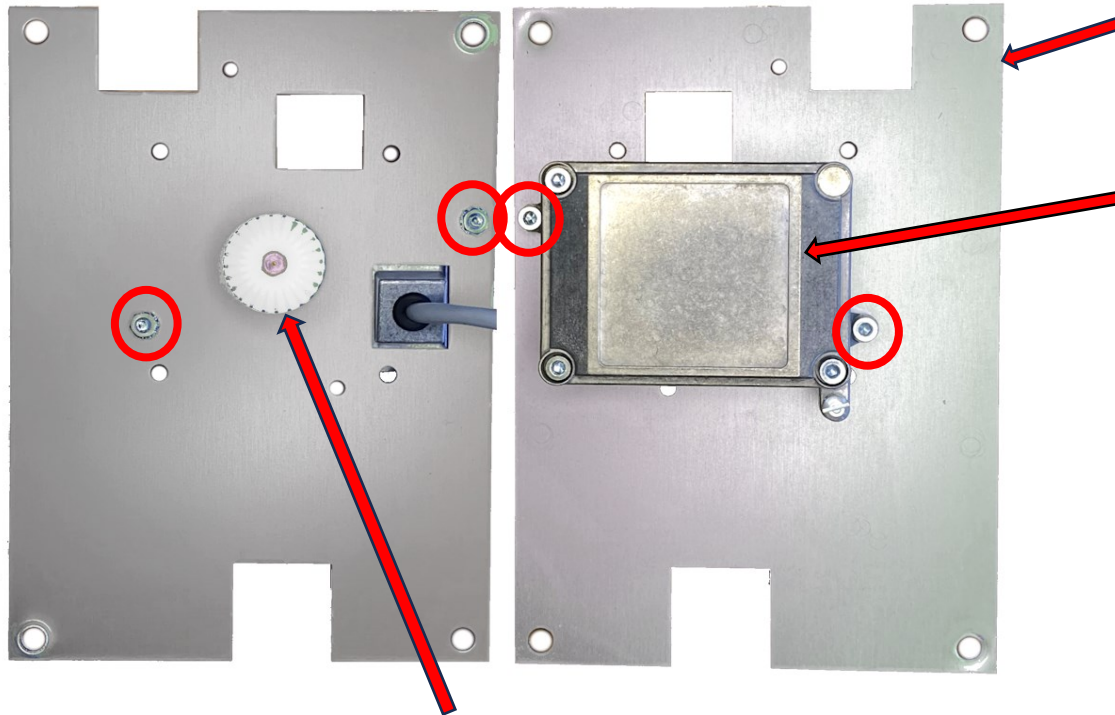


Kit with encoder type 01-09

Kits for mechanical register **without** printer



# Kit for encoder type 01-09 (part no. 99.5004)

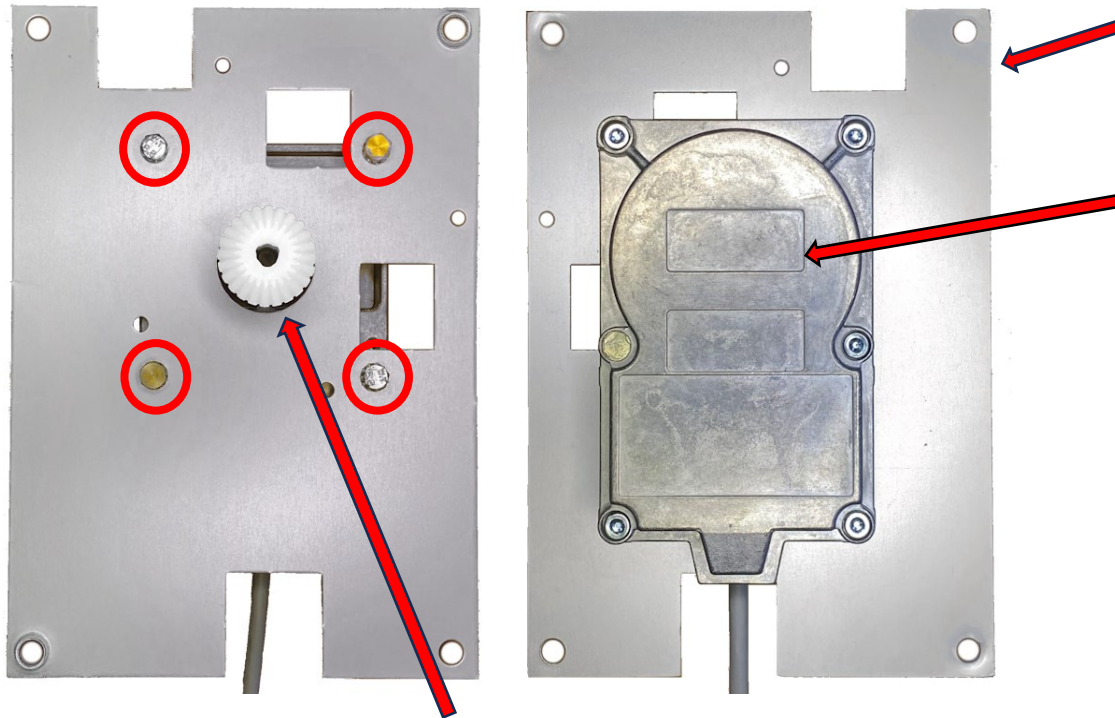


- The 99.5004 kit consists of a bracket and all screws needed for mounting the 01-09 encoder on the bracket
- The encoder is ordered separately along with the kit. Its part no. always starts with 98.xxxx
- The encoder type 01-09 is a series of encoders with the same formfactor but different specifications
- The encoder and kit are delivered assembled.

- Encoder's shaft-coupling (bevel gearwheel) part no. 62.0162  
This specific coupling is factory mounted and cannot be replaced

# Kit for encoder type 01-08 (part no. 99.5001)

ELTOMATIC



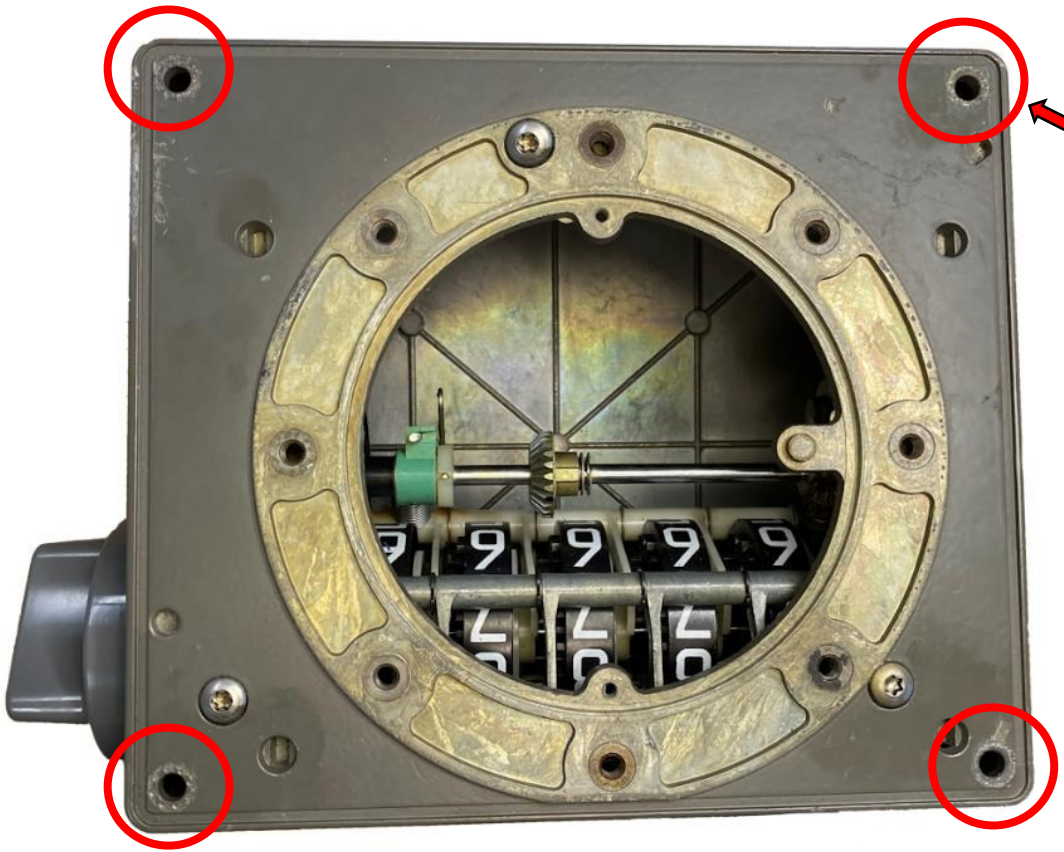
- The 99.5001 kit consists of a bracket and all screws needed for mounting the 01-08 encoder on the bracket
- The encoder is ordered separately along with the kit. Its part no. always starts with 98.xxxx
- The encoder type 01-08 is a series of encoders with the same formfactor but different specifications
- The encoder and kit are delivered assembled.

- Encoder's shaft-coupling (bevel gearwheel) part no. 62.0098  
This specific coupling is factory mounted and cannot be replaced

Register **without** printer  
Installation of kit

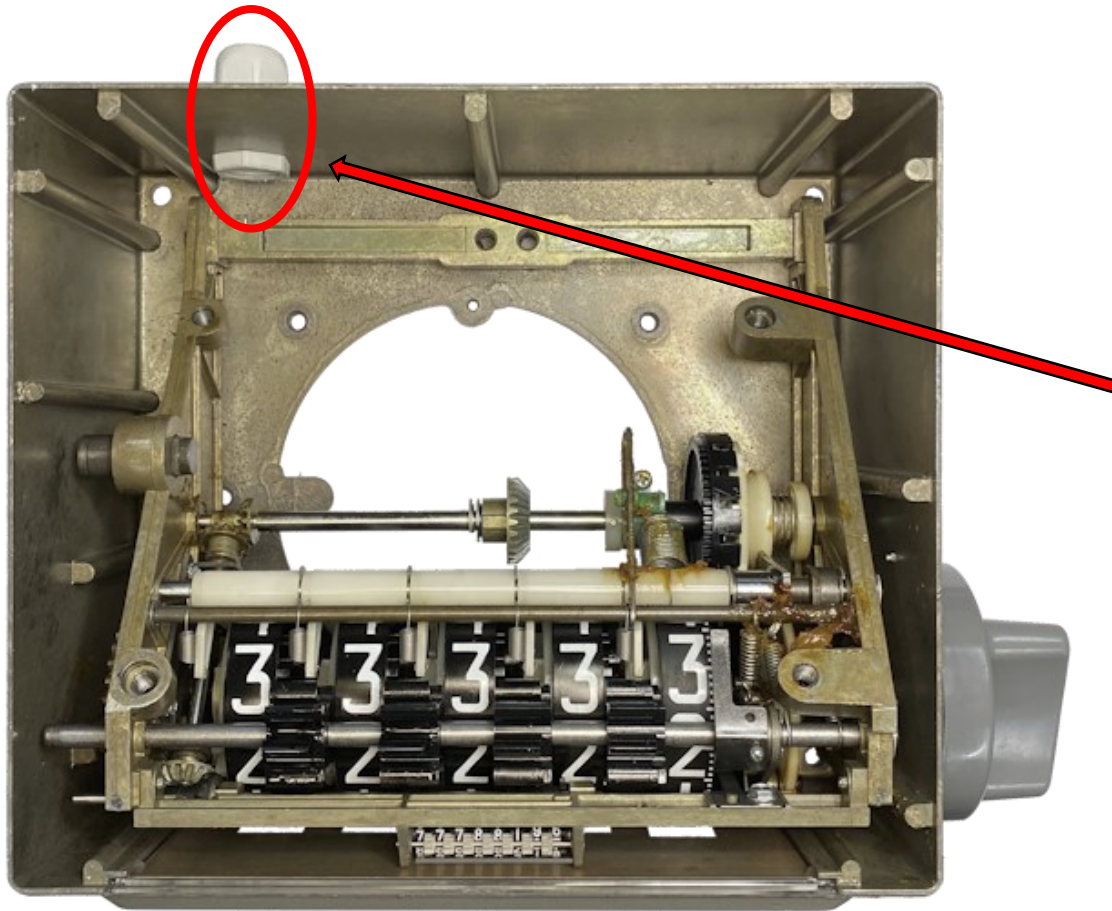


# ELTOMATIC



- Turn the register upright
- Remove the 4 screws and remove the top plate

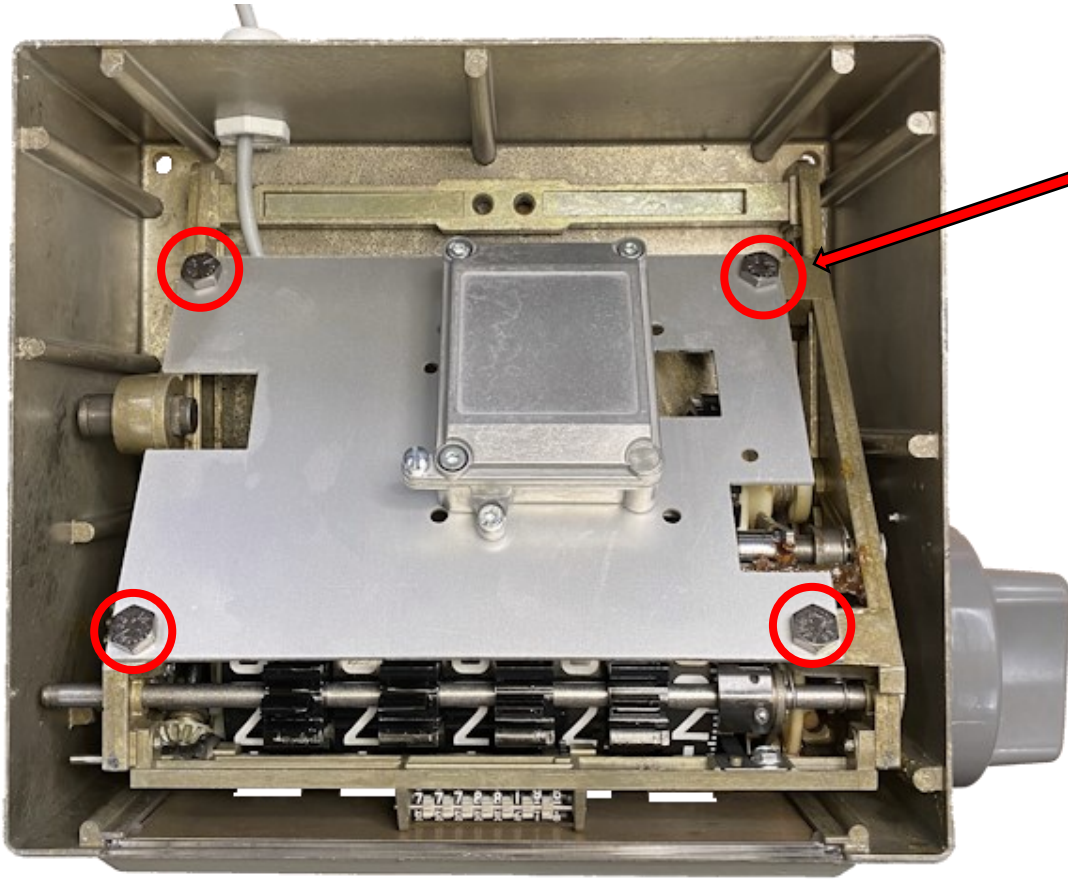
# ELTOMATIC



- Turn the register with the bottom down
- It must be decided how the encoder's cable shall exit the enclosure.
- This enclosure has had a hole drilled in the back plate for the use of a cable gland PG11. The encoder's cable diameter is  $\approx \text{Ø}6\text{mm}$
- It is recommended to use a vacuum cleaner when drilling
- **Notice! The cable gland is not part of the kit**

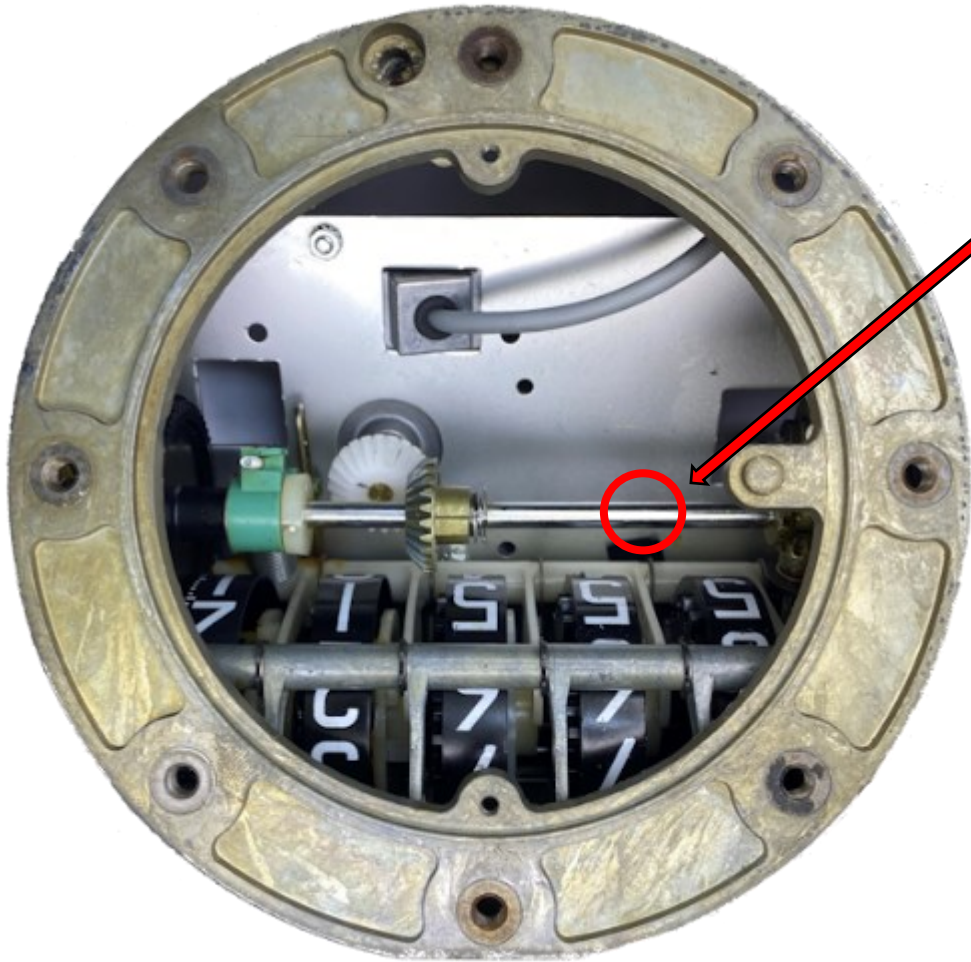


# ELTOMATIC



- Insert the kit into the register
- Fasten the bracket with the 4 screws
- Notice! The 4 screws is not part of the kit

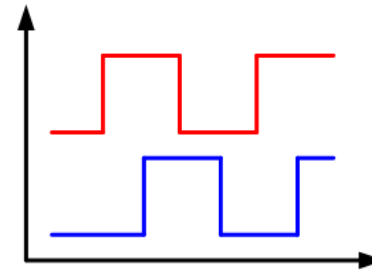
# ELTOMATIC



- Rotate the register's driving axle to ensure the gearwheels are properly engaged
- The axle shall rotate smoothly
- Assemble the register; top plate and bottom screws



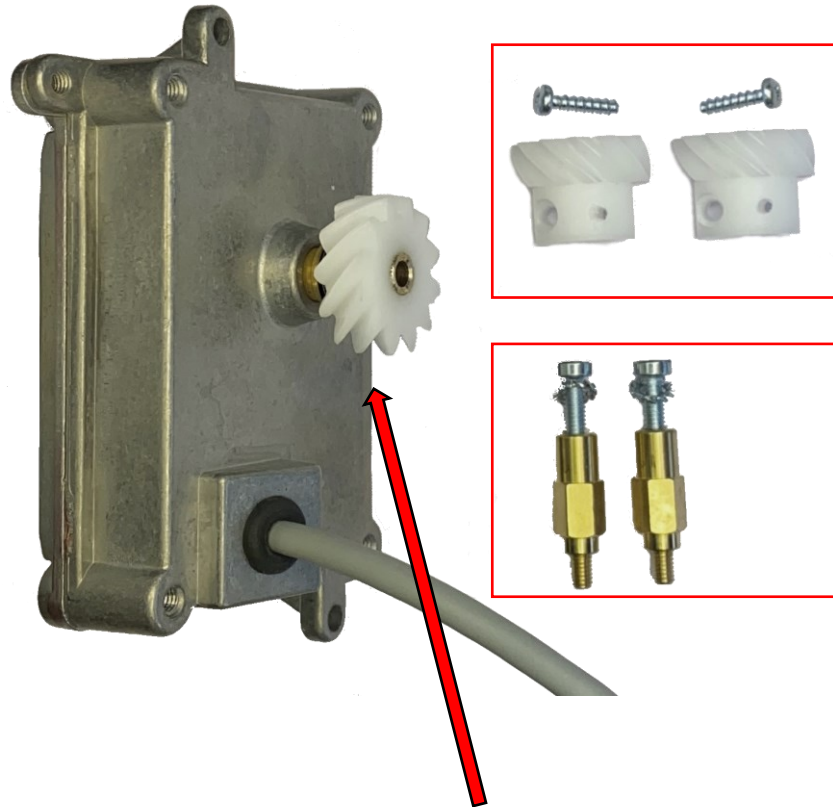
**Electronical register is now ready for use.**



## Kit for mechanical register **with** printer



## Kit with encoder type 01-09 (part no. **99.5002**)



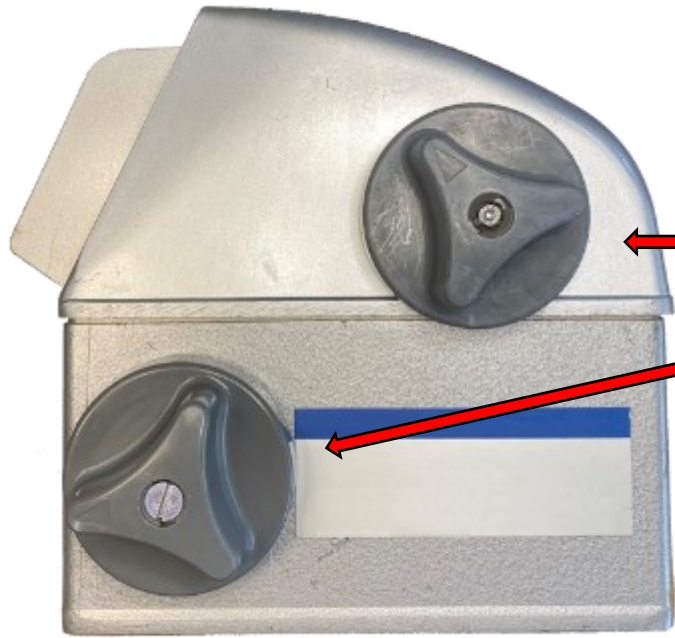
- The **99.5002** kit consists of a split-gear and 2 spacers
- The encoder is ordered separately along with the kit. It's part no. always starts with **98.xxxx**
- The encoder type **01-09** is a series of encoders with the same formfactor but different specifications

- Encoder's shaft-coupling (split-gear) part no. **62.0071**  
This specific coupling is factory mounted and cannot be replaced

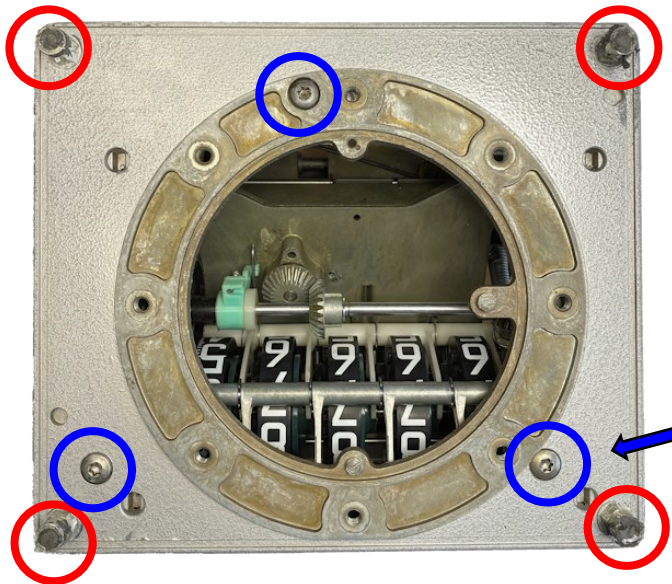
Register **with** printer  
Installation of kit



# ELTOMATIC

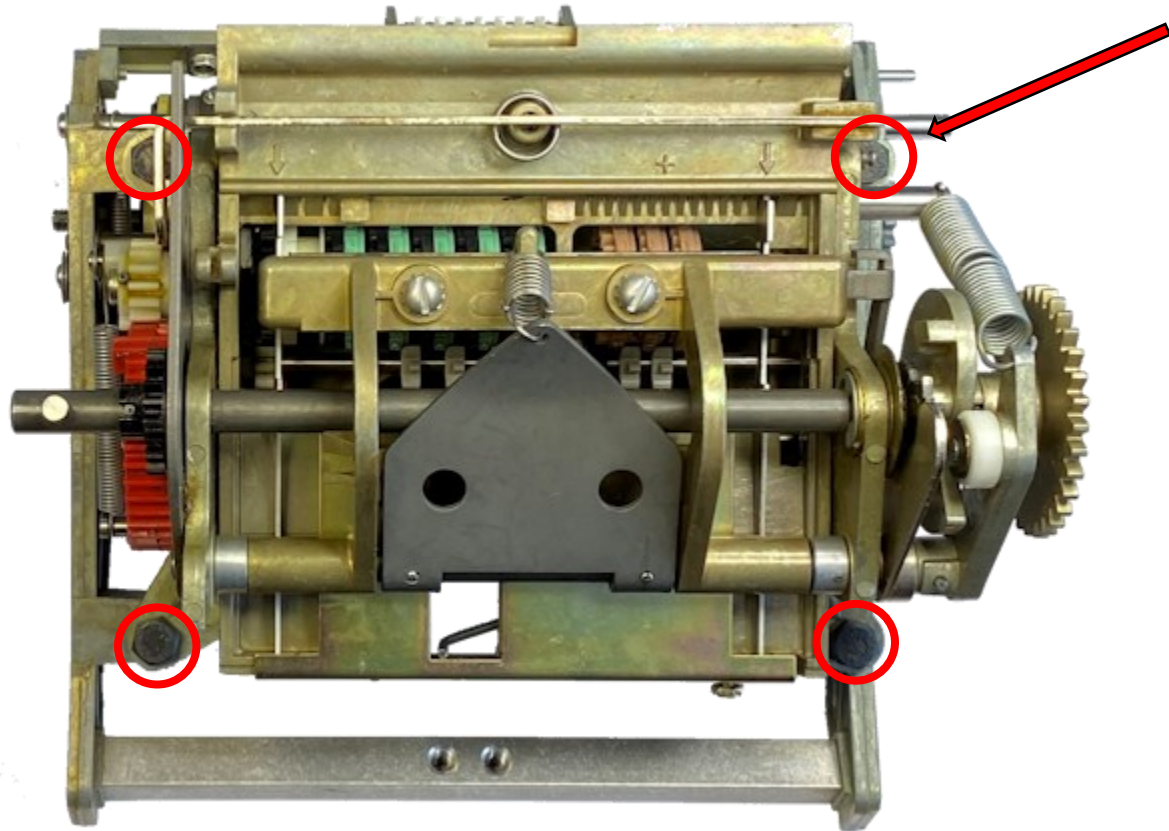


- Dismount the 2 knops

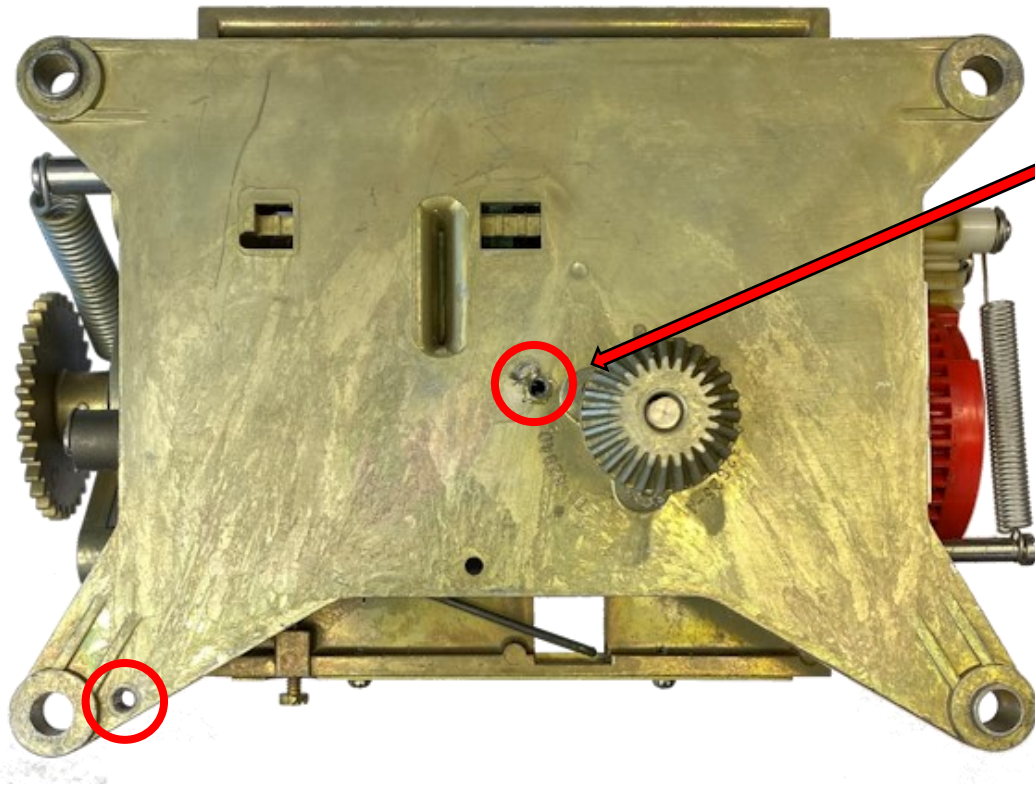


- Turn the register upright
- Remove the 4 screws in the corners
- Carefully remove the top plate
- Remove the 3 Torx screws
- Take out the mechanical part from the enclosure

# ELTOMATIC

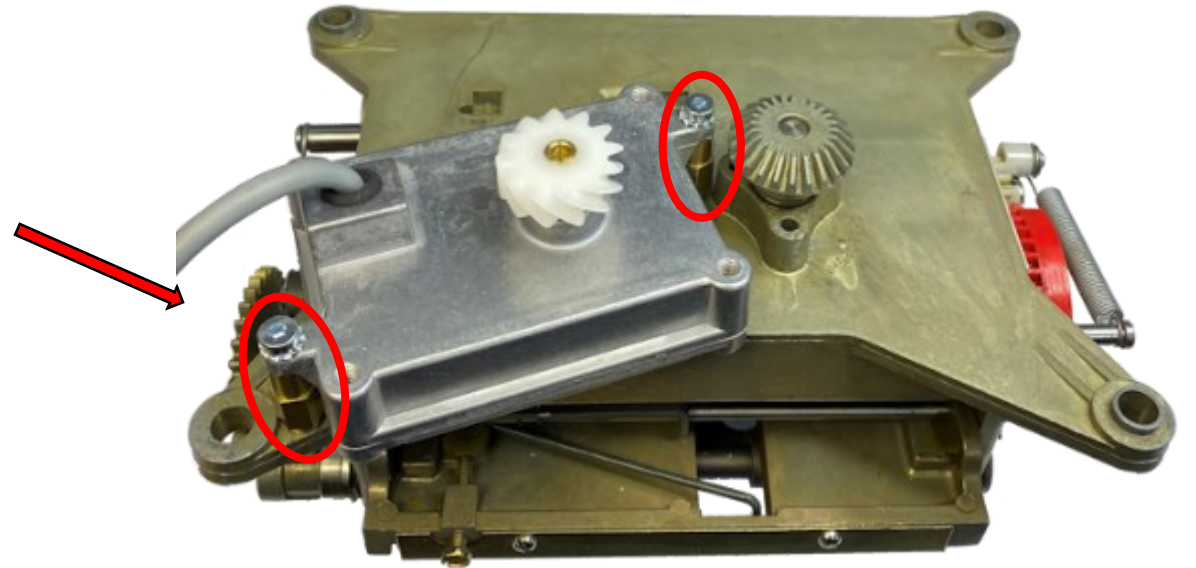


- Remove the 4 bolts
- Take apart the unbolted printer part from the counter part



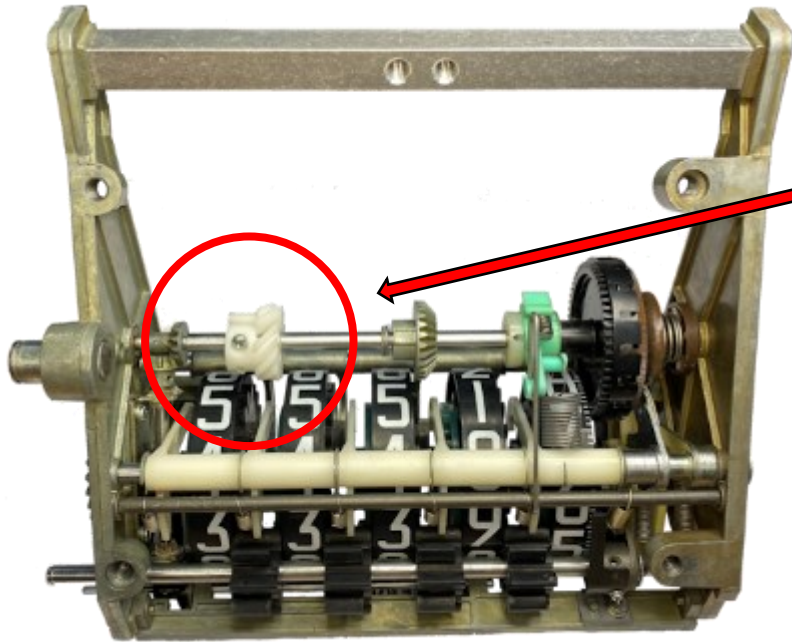
- Mount the spacers and next mount the encoder on top of the spacers

- Mounting the 01-09 encoder requires 2 threaded through-holes to be made.
- A drill  $\varnothing 3.3\text{mm}$  and a threading tap M4 are required
- Drill drawing is shipped along with the kit or available at [www.eltomatic.com](http://www.eltomatic.com)

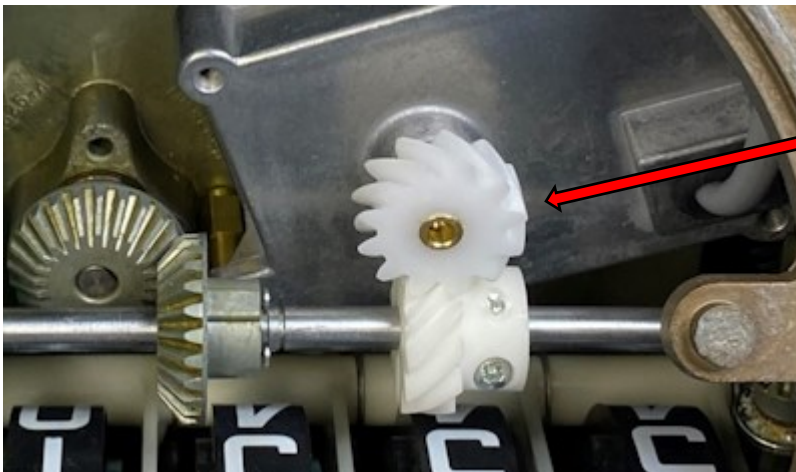




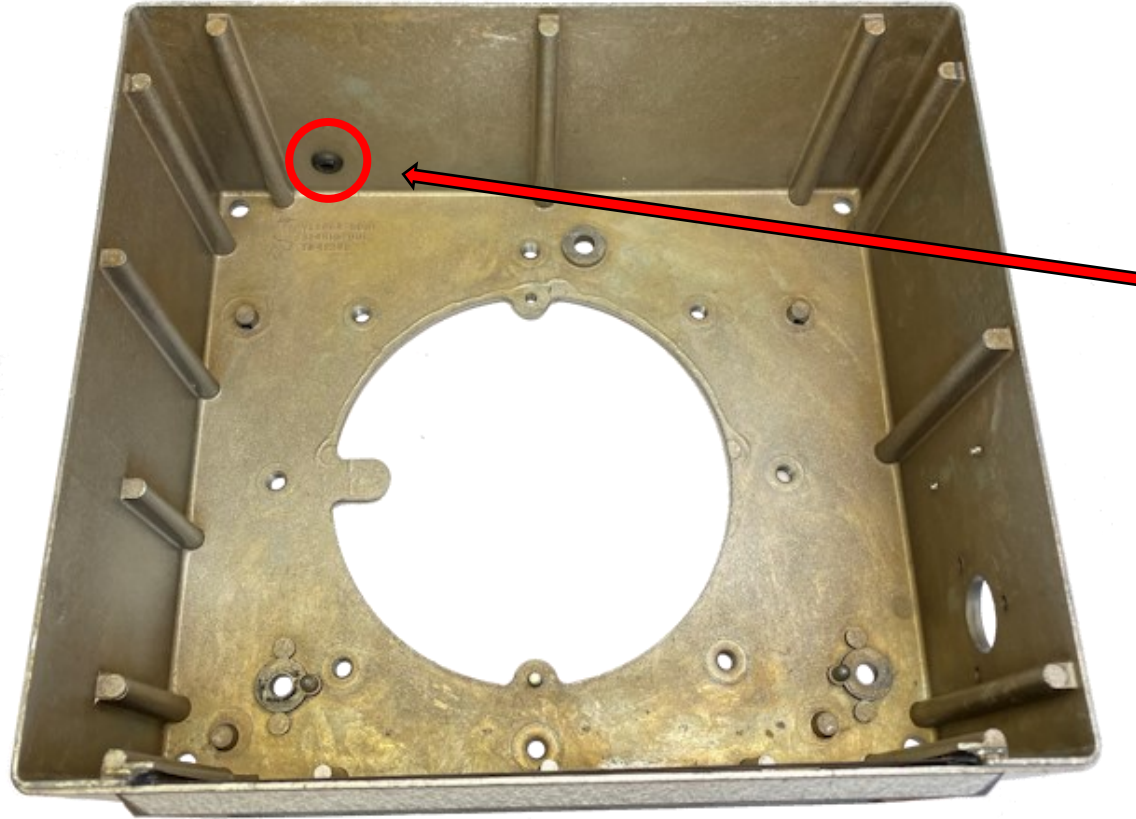
# ELTOMATIC



- On the counter part mount the split-gear loosely on the driving axle
- Assemble the counter part and printer part

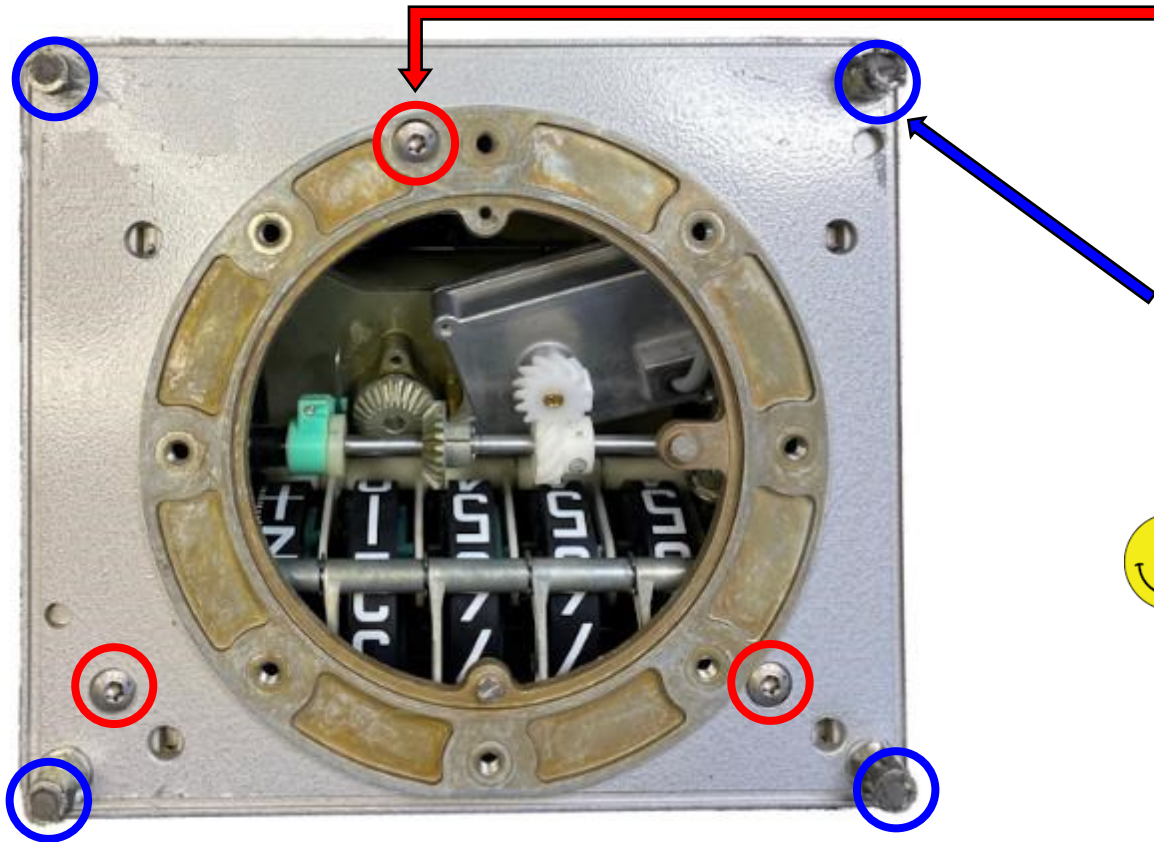


- Slide the split-gear on the axle to the point where the gear wheels are properly engaged. Tighten the 2 screws on the split-gear
- The driving axle shall rotate smoothly



- It must be decided how the encoder's cable shall exit the enclosure.
- This enclosure has had a hole drilled in the back plate for the use of a rubber grommet  
The encoder's cable diameter is  $\approx \text{Ø}6\text{mm}$
- It is recommended to use a vacuum cleaner when drilling
- **Notice! The grommit is not part of the kit**

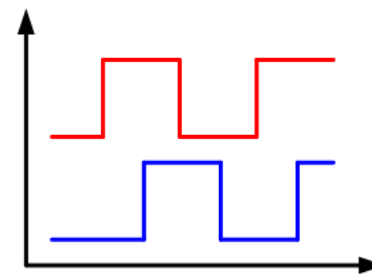
# ELTOMATIC



- Turn the register upright. Insert the mechanics and mount the 3 screws
- Assemble top plate, the 4 bottom screws and the 2 knops



Electronical register is now ready for use.



# For more information

- **Visit Eltomatic's homepage:**

[www.eltomatic.com](http://www.eltomatic.com)

[www.eltomatic.com](http://www.eltomatic.com) -> [products](#) -> [kits for mechanical registers](#)

- **Don't hesitate to contact us:**

Phone: **+45 98 24 61 66**

Email: [eltomatic@eltomatic.com](mailto:eltomatic@eltomatic.com)